

Monitoring Immune Response in Mice - H-2K^b OVA MHC Tetramers



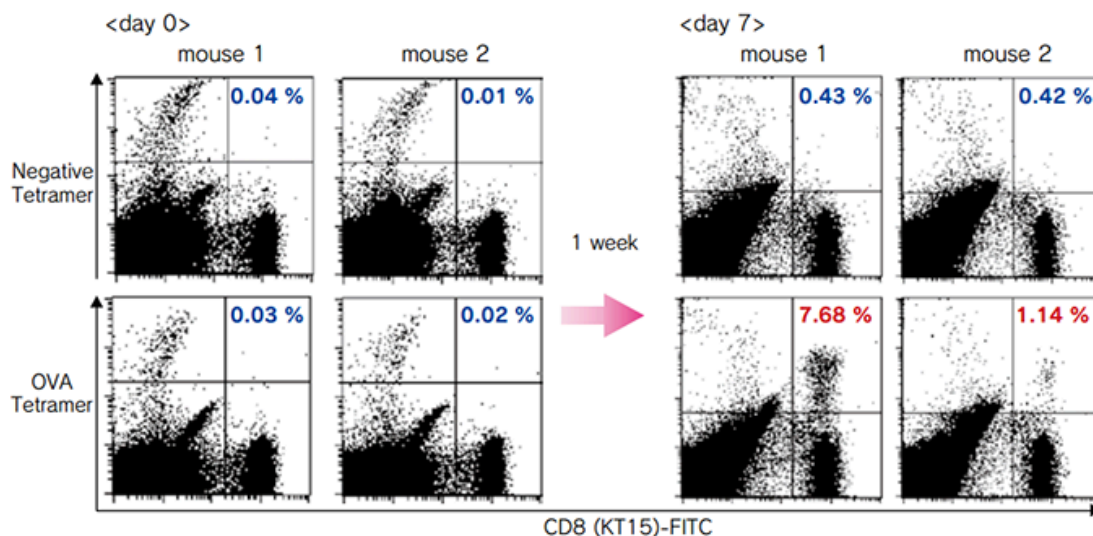
What is OVA?

Ovalbumin (OVA), the major protein found in chicken egg whites, is a T cell-dependent antigen commonly used as a model protein for studying antigen-specific immune responses in mice.

H-2K^b OVA Tetramer

H-2K^b OVA Tetramer detects OVA-specific T cells in C57BL/6 and other mouse strains expressing the class I allele, H-2K^b.

The figures below are staining data of two C57BL/6 mice splenocytes using T-Select H-2K^b OVA Tetramer (Code No. TS-5001-1C). The number on the top right in each dot blot indicates positive cell population rate (%) in CD8⁺ cells.



First, H-2K^b-restricted OVA antigen peptide was mixed with a second “helper” peptide designed to induce T helper activity. This mixture was emulsified with adjuvant, and intraperitoneal (IP) immunizations against two C57BL/6 mice were performed.

Spleens were harvested 10 days after the final immunization, take samples to test staining as “day 0”, and remaining splenocytes were stimulated by the OVA peptides *in vitro* for 1 week. The stimulated splenocytes were stained using [Code No. TS-5001-1C](#) (day 7).

Find out more at MBL website for

- Induction method for antigen-specific murine CTL
- Effect of CD8 antibody clones on H-2K^b OVA Tetramer staining

[Find out more](#) →

Product code

- [TS-5001-1C](#) T-Select H-2Kb OVA Tetramer-SIINFEKL-PE
- [TS-5001-2C](#) T-Select H-2Kb OVA Tetramer-SIINFEKL-APC

[Mouse MHC class I Tetramer Full Product List](#) 👍

Stay tuned for more updates and product information in our upcoming newsletters!

Thank you for choosing MBL for your biological research needs.

For research use only. Not for use in diagnostic or therapeutic procedures. The information is as of August 2024. Please contact us for the latest information. Please read the data sheets carefully before use

Please see the link below for the policy regarding the handling of personal information.
<https://www.mblbio.com/e/privacy/>

MEDICAL & BIOLOGICAL LABORATORIES CO., LTD.
SUMITOMO FUDOSAN SHIBADAIMON NICHOME BLDG.
2-11-8 Shibadaimon, Minato-ku, Tokyo 105-0012 Japan
E-mail: inquiry-ruo@mbl.co.jp

<https://www.mblbio.com/e/>

*If you have no recollection of this email, please contact us above.

*Reproducing all or any part of the contents is prohibited.

MBL is a group company of JSR Life Sciences, LLC.
JSR Life Sciences, LLC is committed to the advancement of human health worldwide as a strategic partner to companies that discover, develop and deliver products to treat disease and improve the quality of life for patients.

Based in Sunnyvale, CA, JSR Life Sciences operates a network of manufacturing facilities, R&D labs and sales offices in key markets throughout North America, Europe and Asia-Pacific.

MEDICAL & BIOLOGICAL LABORATORIES CO., LTD.,2-11-8
Shibadaimon,SUMITOMO FUDOSAN SHIBADAIMON NICHOME
BLDG.,Minato-ku,Tokyo,105-0012,Japan

[Unsubscribe subscription settings](#)