

Anti-integrin $\alpha\beta6$ autoantibody measurement reagent - Anti-integrin $\alpha\beta6$ ELISA kit

Novel biomarker for ulcerative colitis (UC)



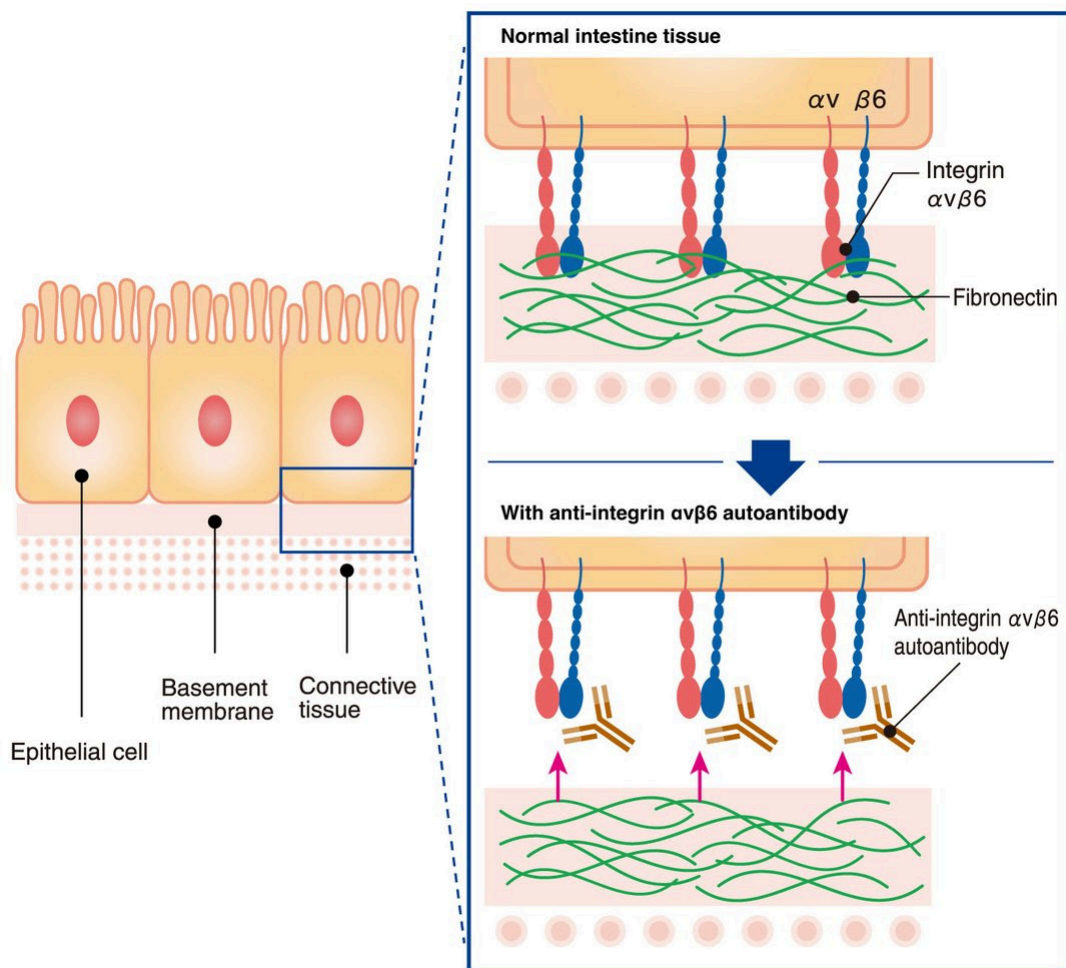
- High sensitivity and specificity
- Pathophysiological role
- Easy detection from blood

[find out more →](#)

Potential pathophysiological role of anti-integrin $\alpha\beta6$ autoantibody

Integrin $\alpha\beta6$, a heterodimeric protein expressed in epithelial cell, is a receptor for fibronectin, extracellular matrix protein. The recent publications reported that the autoantibody against integrin $\alpha\beta6$ was frequently detected in ulcerative colitis patients¹⁻⁴). It has been reported that the anti-integrin $\alpha\beta6$ autoantibody may induce epithelial cell damage as a potential pathogenic role of ulcerative colitis¹). (see the diagram below)

Anti-Integrin $\alpha\beta6$ ELISA Kit is a kit to provide a highly specific detection of anti-integrin $\alpha\beta6$ autoantibody in human serum.



Evidence for anti-integrin $\alpha\text{v}\beta\text{6}$ autoantibody as the biomarker of ulcerative colitis

- Patients with ulcerative colitis had IgG autoantibodies against integrin $\alpha\text{v}\beta\text{6}$ ^{1,2}).
- Anti-integrin $\alpha\text{v}\beta\text{6}$ autoantibody titers correlated with ulcerative colitis disease activity¹).
- IgG from patients with ulcerative colitis bound to the integrin $\alpha\text{v}\beta\text{6}$ expressed on colonic epithelial cells to block integrin $\alpha\text{v}\beta\text{6}$ –fibronectin binding¹).
- Anti-integrin $\alpha\text{v}\beta\text{6}$ autoantibodies were frequently detected in pediatric ulcerative colitis as well³).
- Auto-reactive plasma cell clone targeting integrin $\alpha\text{v}\beta\text{6}$ were isolated from ulcerative colitis⁴).
- Anti-Integrin $\alpha\text{v}\beta\text{6}$ autoantibodies were detected in sera, years before diagnosis of ulcerative colitis⁵).

And, the existence of autoantibodies against integrin $\alpha\text{v}\beta\text{6}$ in most patients with Primary Sclerosing Cholangitis (PSC) were reported⁶).

[Contact us](#)

References

1. T. Kuwada *et al.* Identification of an Anti-Integrin $\alpha\text{v}\beta\text{6}$ Autoantibody in Patients With Ulcerative Colitis. *Gastroenterology*. 2021;160(7):2383-2394.e21.
2. N. Rydell *et al.* Measurement of Serum IgG Anti-Integrin $\alpha\text{v}\beta\text{6}$ Autoantibodies Is a Promising Tool in the Diagnosis of Ulcerative Colitis. *J Clin Med*. 2022;11(7):1881.
3. Y. Muramoto *et al.* Anti-Integrin $\alpha\text{v}\beta\text{6}$ Antibody as a Diagnostic Marker for Pediatric Patients With Ulcerative Colitis. *Gastroenterology*. 2022;163(4):1094-1097.e14.

4. M. Uzzan *et al.* Ulcerative colitis is characterized by a plasmablast-skewed humoral response associated with disease activity. *Nat Med.* 2022;28(4):766-779.
5. A. E. Livanos *et al.* Anti-Integrin $\alpha\beta6$ Autoantibodies Are a Novel Biomarker That Antedate Ulcerative Colitis. *Gastroenterology.* 2023;164(4):619-629.
6. H. Yoshida *et al.* Anti-integrin $\alpha\beta6$ autoantibodies in patients with primary sclerosing cholangitis *Gastroenterol.* 2023;58(8):778-789.

Product information

Stay tuned for more updates and product information in our upcoming newsletters!

Thank you for choosing MBL for your biological research needs.

For research use only. Not for use in diagnostic or therapeutic procedures. The information is as of August 2024. Please contact us for the latest information. Please read the data sheets carefully before use

Please see the link below for the policy regarding the handling of personal information.
<https://www.mblbio.com/e/privacy/>

MEDICAL & BIOLOGICAL LABORATORIES CO., LTD.
SUMITOMO FUDOSAN SHIBADAIMON NICHOME BLDG.
2-11-8 Shibadaimon, Minato-ku, Tokyo 105-0012 Japan
E-mail: inquiry-ruo@mbl.co.jp

<https://www.mblbio.com/e/>

*If you have no recollection of this email, please contact us above.

*Reproducing all or any part of the contents is prohibited.

MBL is a group company of JSR Life Sciences, LLC.
JSR Life Sciences, LLC is committed to the advancement of human health worldwide as a strategic partner to companies that discover, develop and deliver products to treat disease and improve the quality of life for patients.
Based in Sunnyvale, CA, JSR Life Sciences operates a network of manufacturing facilities, R&D labs and sales offices in key markets throughout North America, Europe and Asia-Pacific.

MEDICAL & BIOLOGICAL LABORATORIES CO., LTD., 2-11-8
Shibadaimon, SUMITOMO FUDOSAN SHIBADAIMON NICHOME
BLDG., Minato-ku, Tokyo, 105-0012, Japan

[Unsubscribe subscription settings](#)