

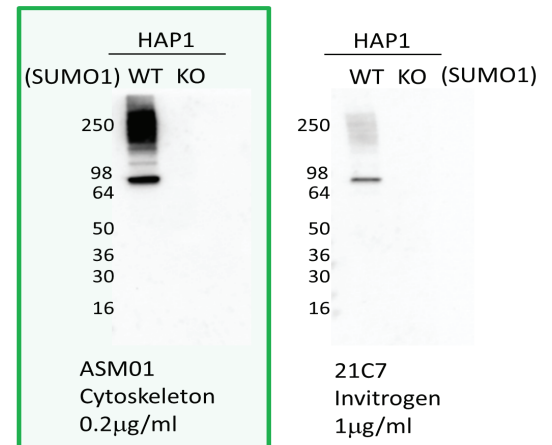
## New SUMO1 Product Summary Highlights

### SUMO1 antibody (Cat. # ASM01)

The strongest SUMO1 antibody available: note the robust profile obtained compared to another commercial SUMO1 antibody

Exceptional specificity: no signal in SUMO1 knockout lane

Learn more at: <https://www.cytoskeleton.com/sumo1-antibody-asm01>

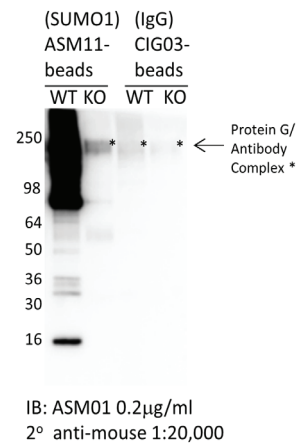


### SUMO1 affinity beads (Cat. # ASM11-beads)

The only SUMO1 affinity beads commercially available with precise specificity for SUMO1 modified proteins

Investigate endogenous SUMO1 modifications for any target protein

Learn more at: <https://www.cytoskeleton.com/sumo1-asm11-beads>



### Signal-Seeker SUMO1 Detection Kit (Cat. # BK165)

The only SUMO1 detection kit available: contains all of the essential components needed for effective SUMO1 detection

Perfect for scientists that are new to the SUMOylation field

Learn more at: <https://www.cytoskeleton.com/bk165>



### Essential Kit Components:

- IP Affinity Beads: (Cat. # ASM11-beads)
- IP control Beads: (Cat. # CIG03-beads)
- Universal Lysis System
- Key Inhibitors
- Wash Reagents
- Elution Reagents
- Spin Columns
- Protein Quantitation System
- Chemiluminescence