

Ubiquitination and Acetylation Detection Kits:

Limited Time Offer: 20% off until June 30th!!

How Do Signal-Seeker Kits Simplify PTM Detection?

By Providing optimized components for effective PTM enrichment

<u>Enrichment Steps:</u>	<u>With Signal-Seeker kits</u>	<u>With Commercial PTM affinity beads</u>
Sample lysate Prep: -Lysis buffer -Inhibitor cocktail -Protein quantitation	✓	X
Pre-clearing lysates	✓	X
Antibody for IP	✓	✓
Affinity Matrix	✓	✓
Wash Buffer	✓	X
Elution System	✓	X
Maximal Sensitivity Chemiluminescence	✓	X

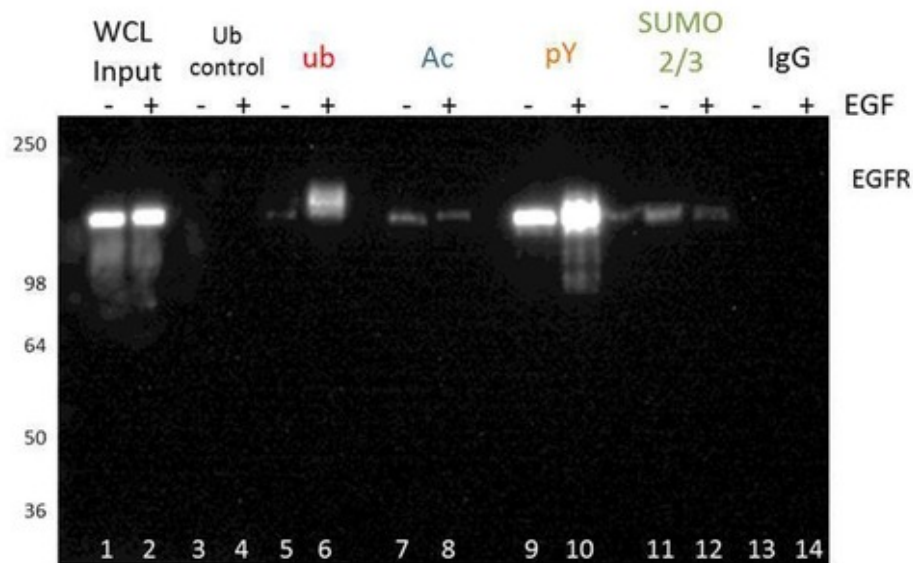
Highlights: The comprehensive [Signal-Seeker PTM detection kits](#) contain all of the essential components needed for effective, endogenous detection of your PTM modified proteins

Recent Citations using Signal-Seeker PTM Detection Kits:

Article 1: [Dubuisson L. et al. 2018](#). Stability of HTLV-2 antisense protein is controlled by PML nuclear bodies in a SUMO-dependent manner. *Oncogene*. doi: 10.1038/s41388-018-0163-x. -- [Signal-Seeker kit BK162 \(SUMO 2/3\)](#)

Article 2: [Kaci A. et al. 2018](#). The E3 SUMO ligase PIAS? is a novel interaction partner regulating the activity of diabetes associated hepatocyte nuclear factor-1a. Sci Rep. doi: 10.1038/s41598-018-29448-w. -- [Signal-Seeker kit BK162 \(SUMO 2/3\)](#)

Article 3: [Horita H. et al. 2018](#). Utilizing Optimized Tools to Investigate PTM Crosstalk: Identifying Potential PTM Crosstalk of Acetylated Mitochondrial Proteins. Proteomes. doi: 10.3390/proteomes6020024. -- [Signal-Seeker kit BK163 \(Ac\)](#)



Example Shown: EGFR PTM profile (Ub, Ac, pY, SUMO 2/3, and controls) in response to EGF.

[Click here](#) to see a peer-reviewed JoVE method video utilizing Signal-Seeker PTM Detection Kits

Signal Seeker Detection Toolkits

[\(BK161\)](#) Signal-Seeker Ubiquitination Detection Kits (30 Assays)

[\(BK161-S\)](#) Signal-Seeker Ubiquitination Detection Kits (10 Assays)

[\(BK163\)](#) Signal-Seeker Acetylation Detection Kits (30 Assays)

[\(BK163-S\)](#) Signal-Seeker Acetylation Detection Kits (10 Assays)

[\(BK160\)](#) Signal-Seeker Phosphotyrosine Detection Kits (30 Assays)

[\(BK160-S\)](#) Signal-Seeker Phosphotyrosine Detection Kits (10 Assays)

[\(BK165\)](#) Signal-Seeker SUMO1 Detection Kits (30 Assays)

[\(BK165-S\)](#) Signal-Seeker SUMO1 Detection Kits (10 Assays)

[\(BK162\)](#) Signal-Seeker SUMO 2/3 Detection Kits (30 Assays)

[\(BK162-S\)](#) Signal-Seeker SUMO2/3 Detection Kits (10 Assays)

Cytoskeleton, Inc. | (303) 322-2254 | cserve@cytoskeleton.com

www.cytoskeleton.com