

CODE No. 5323

For Research Use Only, Not for use in diagnostic procedures.

Ab-Match Assembly Human PAP1 (REG3 α) Kit

For technical material or related information, please refer to <http://ruo.mbl.co.jp/product/abmatch/abmatch.html>.

■ Advantage

By using Ab-Match Assembly Human PAP1 (REG3 α) Kit in combination with the Ab-Match Universal Kit (MBL; code no. 5310), human PAP1 can be measured quantitatively and specifically. The two kits are sufficient to produce one 96-well microplate. This product is intended for research use only.

■ Materials provided 1× 96 wells

Name	Materials	Quantity	Dilution ratio
PAP1 standard	Recombinant human PAP1*	200 μ L × 1 vial	1:10 – 1:320 or 1:640
Anti-PAP1 capture antibody	Mouse anti-PAP1 monoclonal antibody (IgG) (50% Glycerol/PBS)	60 μ L × 1 vial	1:200
Anti-PAP1 detection antibody	Biotin conjugated rabbit anti-PAP1 polyclonal antibody	110 μ L × 1 vial	1:101
Streptavidin conj. peroxidase	Streptavidin conjugated peroxidase (SA-HRP)	110 μ L × 1 vial	1:101

* The concentration is printed to the label. To avoid repeated freezing and thawing, prepare aliquots.

Note: Kit components must be brought to room temperature (20-30°C) prior to use.

■ Protocol

Coating step	Blocking step	Sample incubation step	Detection antibody incubation step	SA-HRP step	Substrate incubation step	Reading
Add 100 μ L diluted capture antibody to each well ↓ Incubate overnight at 2-8 °C	Wash 2 times ↓ Add 200 μ L of Blocking Agent to each well ↓ Incubate 1 hour at room temperature	Dump out the contents of the wells ↓ Add 100 μ L of samples or standards to each well ↓ Incubate 1 hour at room temperature	Wash 4 times ↓ Add 100 μ L of diluted detection antibody to each well ↓ Incubate 1 hour at room temperature	Wash 4 times ↓ Add 100 μ L of diluted SA-HRP to each well ↓ Incubate 30 minutes at room temperature	Wash 4 times ↓ Dump out the contents of the wells ↓ Add 100 μ L of Substrate Solution to each well ↓ Incubate 30 minutes at room temperature	Add 100 μ L of Stop Solution to each well ↓ Read absorbance at 450 nm

■ Storage and Stability

All kit components must be stored at -20 ~ -30°C. All reagents are stable for 12 months after shipment.

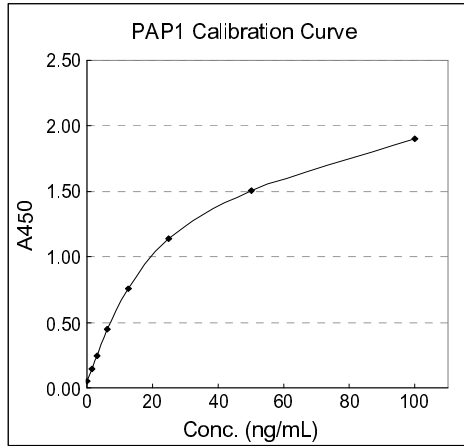
■ Related product

5310 Ab-Match Universal Kit

■ **References**

- 1) Yin, F., *et al.*, *Stem Cells* (2014) In press.
- 2) Levine, J. E. *et al.*, *Blood* **119**, 3854-3860 (2012)
- 3) Harris, A. C. *et al.*, *Blood* **119**, 2960-2963 (2012)
- 4) Ferrara, J. L., *et al.*, *Blood* **118**, 6702-6708 (2011)
- 5) Chen, C. Y., *et al.*, *Clin. Biochem.* **38**, 520-525 (2005)
- 6) Motoo, Y., *et al.*, *Dig. Dis. Sci.* **44**, 1142-1147 (1999)
- 7) Iovanna, J. L., *et al.*, *Gastroenterology* **106**, 728-734 (1994)
- 8) Dusetti, N. J., *et al.*, *Genomics* **19**, 108-114 (1994)

■ **Calibration curve**



■ **References data**

1. Intra-assay

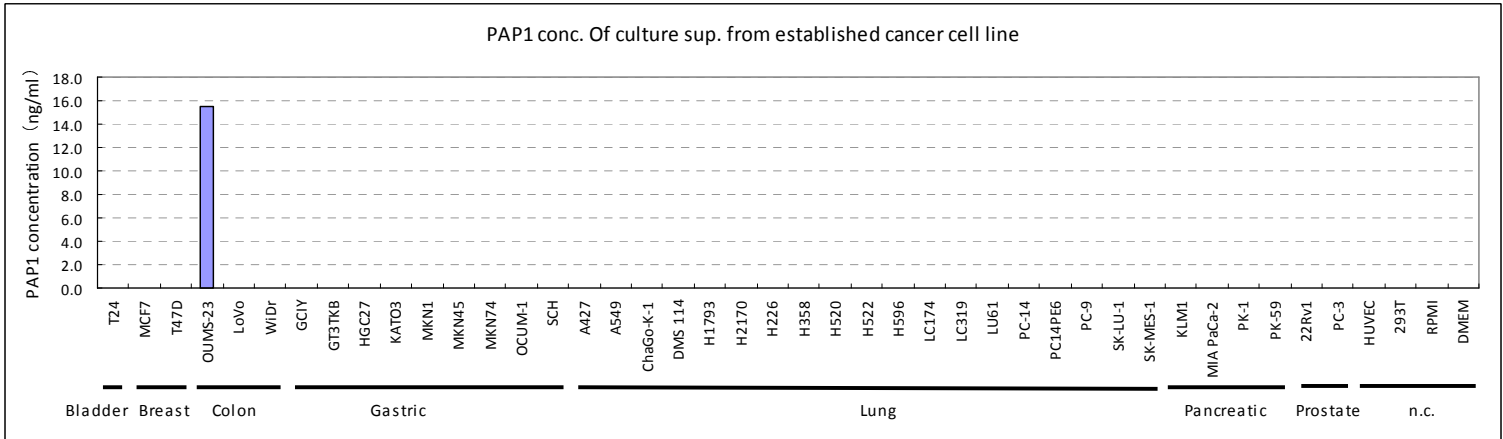
ng/mL	CV%
3.08	5.4
6.03	4.2
12.63	3.2
25.79	8.7
48.54	8.9
100.83	3.9

2. Detection limit (n=8)

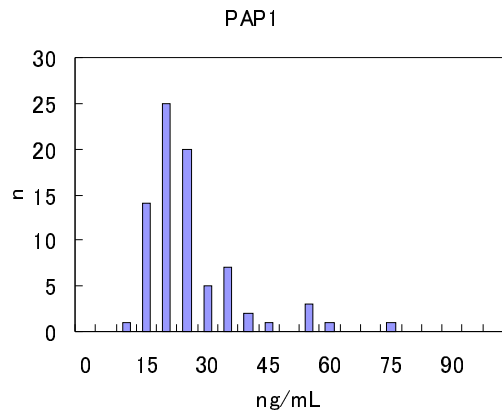
LOB (Limit of Blank)	0.24 ng/mL
LOQ (Limit of Quantification)	3.41 ng/mL

3. Reactivity with established cancer cell line culture supernatant

* These samples were diluted (1:2) with culture medium prior to the assay.



4. Normal range (95% reference interval)



Serum from healthy samples (n=80)

10.6-56.7 ng/mL

* Serum samples were diluted (1:10) prior to the assay.

CODE No. 5323

For Research Use Only, Not for use in diagnostic procedures.

Ab-Match Assembly Human PAP1 (REG3 α) Kit

技術資料や、関連情報はホームページからご利用頂けます。 <http://ruo.mbl.co.jp/product/abmatch/abmatch.html>

■ 特徴

Ab-Match Assembly Human PAP1 (REG3 α) Kit は、Ab-Match Universal Kit (MBL; code no. 5310) と組み合わせてご使用いただくことで、サンドイッチ ELISA 法にて試料中のヒト PAP1 を特異的に測定することができます。このセットで 96 穴マイクロプレート 1 枚分の測定が可能です。本製品は研究用試薬です。ヒトの体内に用いたり、診断の目的に使用しないでください。

■ キット構成 1 × 96 wells

Name	Materials	Quantity	Dilution ratio
PAP1 standard	Recombinant human PAP1*	200 μ L × 1 vial	1:10 – 1:320 or 1:640
Anti-PAP1 capture antibody	Mouse anti-PAP1 monoclonal antibody (IgG) (50% Glycerol/PBS)	60 μ L × 1 vial	1:200
Anti-PAP1 detection antibody	Biotin conjugated rabbit anti-PAP1 polyclonal antibody	110 μ L × 1 vial	1:101
Streptavidin conj. peroxidase	Streptavidin conjugated peroxidase (SA-HRP)	110 μ L × 1 vial	1:101

* 濃度はラベルに記載してあります。凍結融解を避けるため、溶解後は分注してください。

注) キットの構成品は、室温 (20-30°C) に戻してから使用してください。

■ 操作法

Coating step	Blocking step	Sample incubation step	Detection antibody incubation step	SA-HRP step	Substrate incubation step	Reading
希釈した capture antibody を 100 μ L ずつ各 well に分注 ↓ 2-8°C で一晩静置	2 回洗浄 ↓ Blocking Agent を 200 μ L ずつ各 well に分注 ↓ 室温で 1 時間静置	Well の内容物を完全に除去 ↓ 調整した standard 及びサンプルを 100 μ L ずつ各 well に分注 ↓ 室温で 1 時間静置	4 回洗浄 ↓ 希釈した detection antibody を 100 μ L ずつ各 well に分注 ↓ 室温で 1 時間静置	4 回洗浄 ↓ 希釈した SA-HRP を 100 μ L ずつ各 well に分注 ↓ 室温で 30 分間静置	4 回洗浄 ↓ Substrate Solution を 100 μ L ずつ各 well に分注 ↓ 室温で 30 分間静置	Stop Solution を 100 μ L ずつ各 well に分注 ↓ 450 nm にて吸光度を測定

■ 保存と有効

-20 ~ -30°C にて保存してください。有効期間は出荷後 12 ヶ月です。

■ 関連製品

5310 Ab-Match Universal Kit

■ 参考文献

- 1) Yin, F., *et al.*, *Stem Cells* (2014) In press.
- 2) Levine, J. E. *et al.*, *Blood* **119**, 3854-3860 (2012)
- 3) Harris, A. C. *et al.*, *Blood* **119**, 2960-2963 (2012)
- 4) Ferrara, J. L., *et al.*, *Blood* **118**, 6702-6708 (2011)
- 5) Chen, C. Y., *et al.*, *Clin. Biochem.* **38**, 520-525 (2005)
- 6) Motoo, Y., *et al.*, *Dig. Dis. Sci.* **44**, 1142-1147 (1999)
- 7) Iovanna, J. L., *et al.*, *Gastroenterology* **106**, 728-734 (1994)
- 8) Dusetti, N. J., *et al.*, *Genomics* **19**, 108-114 (1994)

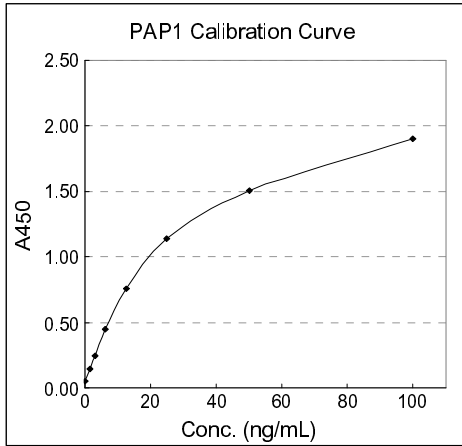
201404-6

MBL MEDICAL & BIOLOGICAL LABORATORIES CO., LTD.

URL <http://ruo.mbl.co.jp>

e-mail support@mbi.co.jp, TEL 052-238-1904

■ 標準曲線例



■ 参考データ

1. 同時再現性

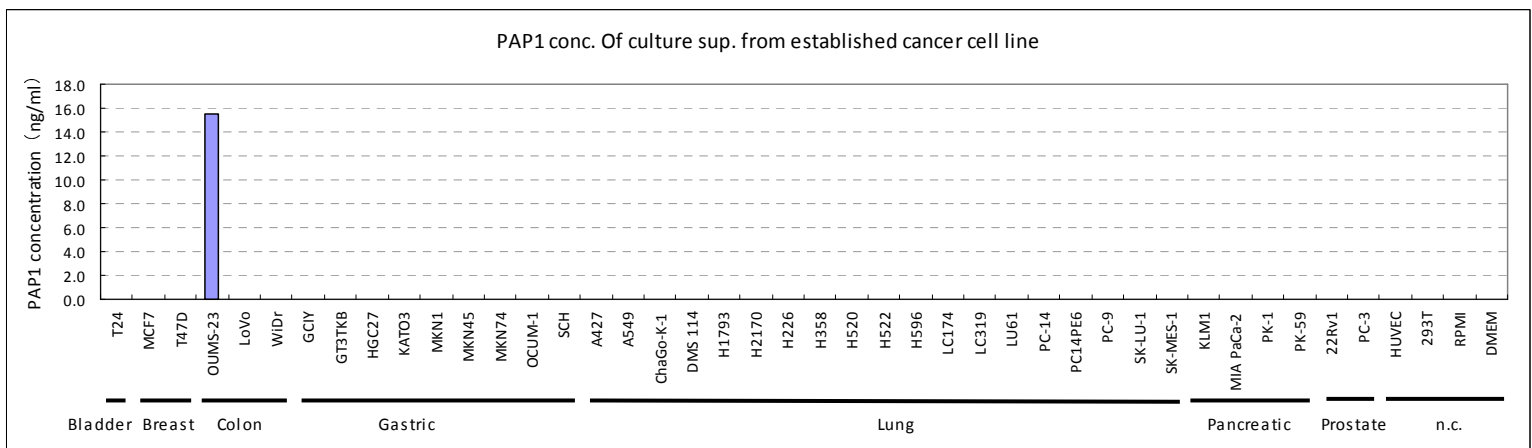
ng/mL	CV%
3.08	5.4
6.03	4.2
12.63	3.2
25.79	8.7
48.54	8.9
100.83	3.9

2. 検出感度 (n=8)

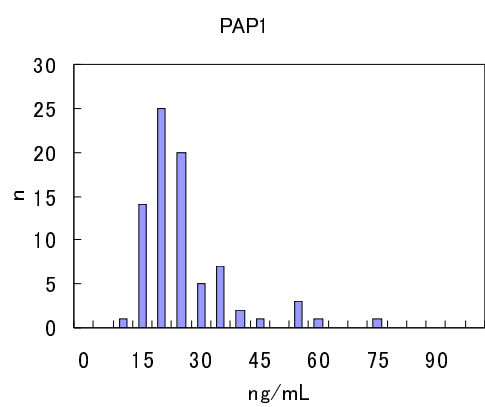
LOB (Limit of Blank)	0.24 ng/mL
LOQ (Limit of Quantification)	3.41 ng/mL

3. 株化癌細胞培養上清との反応性

* 培養上清は、培養液を用いて2倍希釈しました。



4. 標準範囲 (95% reference interval)



Serum from healthy samples (n=80)

10.6-56.7 ng/mL

* 血清は 10 倍希釈しました。